

The logo features a stylized red circular graphic composed of multiple overlapping, brush-stroke-like lines that form a partial circle. The text "SharePoint Saturday" is written in a light blue, sans-serif font, with "SharePoint" on the top line and "Saturday" on the bottom line. Below "Saturday", the word "Indianapolis" is written in a darker blue, sans-serif font.

# SharePoint Saturday Indianapolis

## Introducing SharePoint Designer 2010

Presented by: Woody Windischman, SharePoint MVP

- This is an Introduction/Overview
  - Touch on many areas
  - Details in later sessions  
(Especially Workflow and BCS)
- What is SharePoint Designer?
  - What it Was
  - What's new in 2010
- Lots of Demos!
- Q&A
- Book Giveaway

# The Four Disclaimers

- The information in this presentation is based upon the public beta version of SharePoint and SharePoint Designer 2010.
- Microsoft will almost certainly make changes to some details. (Or else it wouldn't be beta!)
- Certain features demonstrated may be changed significantly (or even eliminated) prior to the actual release of the products.
- I have no knowledge of what such changes might be, so don't ask. 😊

# Not Your Father's FrontPage

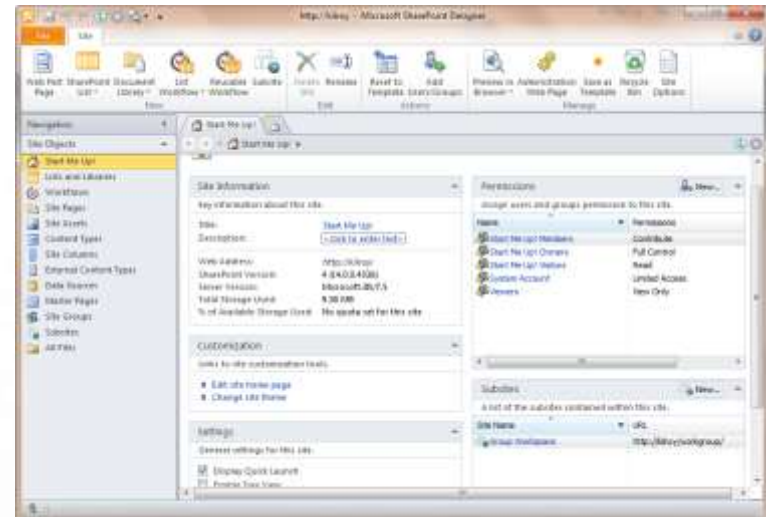
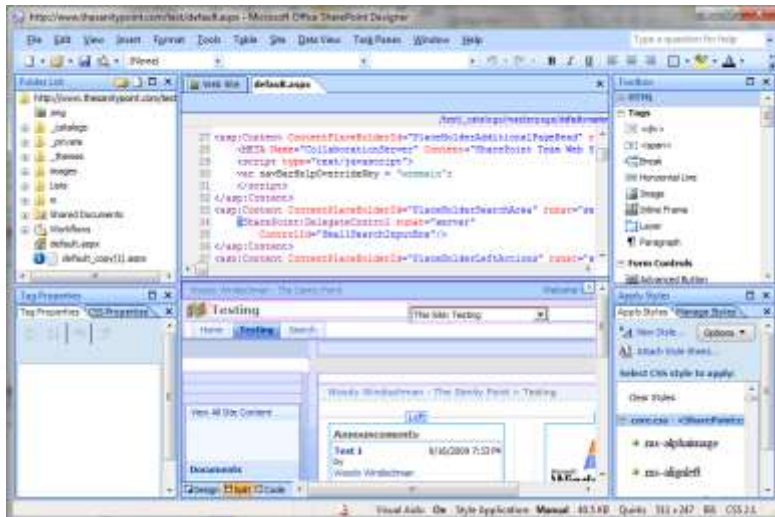
- FrontPage was the Original SharePoint Editor
  - SharePoint Team Services (1.0)
  - WSS 2.0 / SharePoint Portal Server 2003
- Fraternal Twins
  - Expression Web 1.0 (Standards, Non-SP)
  - SharePoint Designer 2007 (SP, FP Legacy)
- SharePoint Designer 2010
  - Drop the Legacy
  - De-Emphasize Page Design
  - Focus on SharePoint Functional Design

## SharePoint Designer 2007

- Looks Like an IDE
- Page Editor Front & Center
- SharePoint Functions Buried
- A “Designer’s Tool”

## SharePoint Designer 2010

- Completely New Design
- Organized by “Artifacts”
- SharePoint Functions All
- An “IT Pro/IW/Dev? Tool”



# Refined, Regulated Power

- No More “All or Nothing”
- SPD 2007 had “Contributor Settings”
- Some Settings now IN SharePoint
- Administrator Control for “dangerous” actions.

# Works & Plays with Others





- SharePoint Designer 2010 Likes to Share!
- Workflow Sketches with Visio
- Forms with InfoPath
- Solutions with Visual Studio

- New UI Walk Through
- Governance/Feature Blocking
- If Time Permits:
  - External Data List
  - Basic Visio Import





# The Rest of Your Day

10:45 – 11:00 am	 <b>Break</b>			
11:00 – Noon	<b>Steve Pietrek</b> Developing Silverlight Applications for SharePoint	<b>Rob Wilson</b> Streamlining Business Process with InfoPath and Workflows	<b>Jennifer Martinez</b> Site Collection Admins: Can business users handle the responsibility (and can IT trust them)?	<b>Kevin Dostalek</b> Social Computing with SharePoint 2010
Noon – 1:00 pm	<b>Lunch</b> 			
1:00 – 2:00 pm	<b>Marcy Kellar</b> What Makes Users Click: Using Design Principles and Usability Best Practices to Improve Intuitiveness of your SharePoint site	<b>Andy Hoffman</b> Making Access and Excel Services Work for Business	<b>Darrin Bishop</b> Goodbye STSADM, Hello PowerShell	<b>Chris Geier</b> The Ins and Outs of SharePoint Workflow
2:00 – 2:15 pm	 <b>Break</b> 			
2:15 – 3:15 pm	<b>Fabian Williams</b> Business Connectivity Services-From the Wading Pool to the Deep End	<b>Daniel Galant</b> Better Workflows with Visio 2010 and SharePoint Designer 2010	<b>Hope Foley, Jim Grabinski</b> SQL Database Administration for SharePoint	<b>David Peterson</b> I Wish I Knew That!
3:15 – 3:30 pm	<b>Break</b>			
3:30 – 4:30 pm	<b>James Curtis</b> Introduction to Client Object Model	<b>Ram Gopinathan</b> Building an Enterprise Taxonomy Solution in Microsoft Office-SharePoint 2007	<b>John Ferringer, Sean McDonough</b> Saving SharePoint: SharePoint Disaster Recovery	<b>Jeff Willinger</b> Social Computing and SharePoint Inside the four walls and OUTside the four walls

- Don't Forget To Fill Out Your Evaluation
- Find Me Online:
  - <http://twitter.com/woodywindy>
  - <http://www.thesanitypoint.com>
  - [woodwind3@hotmail.com](mailto:woodwind3@hotmail.com)